



DUNCHURCH VILLAGE MAGAZINE

DECEMBER 2018

ISSUE 1



PRODUCED BY FRIENDS OF DUNCHURCH SOCIETY
www.friendsofdunchurchsociety.org

IN THIS ISSUE	FODS news	2	Poppies galore	10	WI	18
	Introducing FODS	3	Village hall	10	Tennis club	19
	Dunchurch Pantomaniacs	4	Bridge club	10	Dunchurch remembers	20
	Save Dunchurch group	8	Junior FODS	11	Village churches	22
	School news	9	Dunchurch library	17	Directory	24

email friendsofdunchurch@gmail.com

FODS News – Your Village Needs You!

Some time ago, Dunchurch had considerable success in the best kept village competitions. One of FOD'S primary aims is to resurrect this pride in our village and in doing so, support Rugby Borough Councils entry into the national Britain in Bloom contest 2019 which encourages communities to brighten up the borough with floral displays. To this end, we would like to invite all residents to follow the lead of the Dunchurch businesses who have already committed to taking part in this initiative. There are a variety of categories to choose from including road facing

gardens, community venues, places of worship, allotments, schools and more. For more information, visit www.rugby.gov.uk and search for Rugby in Bloom.



However, if you don't feel you are 'green finger' gifted, why not volunteer to join the FODS working party? Nearer the time, we will need a small army of folk to help us tidy before judging so we would love to hear from you.

Contact us on:
friendsofdunchurch@gmail.com

Wanted! Greens and Public Spaces Team Leader

We need someone to manage our growing group of willing volunteers by organising work schedules and overseeing the 'tidy up' of the green areas in our village.

If you feel you can help with this, please contact Tony Kember on

friendsofdunchurch@gmail.com



Friends of Dunchurch Society



Follow us on Facebook

www.facebook.com/groups/283143168981777

Website currently under construction. Check out

www.friendsofdunchurchsociety.org

Front cover: Last year the statue was dressed as Paddington – look out for this year's transformation before Christmas

Calling all Dunchurch community groups



Are you organising a community event? Would you like us to include it in our next issue in March? Please send full details to friendsofdunchurch@gmail.com.

To advertise in the next issue of Dunchurch Village magazine please contact friendsofdunchurch@gmail.com.



Friends of Dunchurch Society

Formed by likeminded residents who love Dunchurch and its heritage and wish to protect and enhance its environment in order to make the village a better place to live in, work in and visit.

Welcome to the first edition of the FODS magazine which will be delivered to your home four times a year and which we hope you will find interesting and informative. The Friends of Dunchurch is a society which has been formed by residents of Dunchurch who share a common love for the village and its wonderful heritage. We are all very fortunate to live in a place with so much history and with so many assets, which we are anxious to preserve.

Recently at the 2018 Annual Village Meeting, many of those attending expressed concern with the general poor state of the village and so the idea was formed by Ann and Stewart Wright and Tony and Sue Kember to start a Society to work for the good of Dunchurch.

If you share a love of Dunchurch, there are many projects where you could get involved and meet others who feel as you do. If you would like to join us and be part of a team of volunteers working

together to improve and enhance our village environment, simply email us with your contact details and you will receive our regular newsletter. Address your email to friendsofdunchurch@gmail.com and head it 'Register me as a member of FODS'.

This is a community project and there is no membership fee. So, come on Dunchurch. Let's get together and restore our village to the beautiful place it deserves to be.

FODS Management Group: Tony Kember, Sue Kember, Melvyn Macartney, Linda Beech



Focus on...

Dunchurch Pantomaniacs – A 30-Year Caper!

By Sue Protheroe



Like a lot of good ideas, the idea of a village pantomime came to life over a few drinks in The Green Man!

Ann Wright, a member of the Dunchurch Festival Group, had watched a colleague in another village panto and voiced 'we could do that.' Although there was total agreement from all present (no doubt fuelled by the odd drink or two!) in the cold light of day it did seem quite a daunting task. However, undeterred, posters went up and fliers were distributed and lots of cajoling telephone calls were made. Thus, the Dunchurch Pantomaniacs (which was originally funded by the Dunchurch Festival Group) was 'born.' Following their very first 1990 production of 'Little Miss Muffet', the group became a separate self-funding organisation and ever since has held an annual production which has raised significant funds for charity.

Very few of us who were involved in the early days had experience of such productions but we did have the benefit, knowledge and help of the late Ray Allan and of course our dear and much missed friend Don Townend who for many years

nurtured the group. This coupled with a wealth of enthusiasm and as it turns out, quite a bit of undiscovered talent led to the Pantomaniacs success. From the start, the emphasis was on community and the inclusion of all and the odd 'blooper or two' in the earlier productions only helped to serve up more comedy and endeared the group to the audiences who were appreciative of the group's efforts. After all, does it really matter if a chandelier remains in situ throughout a scene in Sherwood Forest?

Nowadays, the Dunchurch Pantomaniacs produce a slick and professional show but still manage to maintain that community spirit that audiences have come to know and love.

Their forthcoming January 2019 production of 'Billy the Kid' (which incidentally is another world premier for the group which has taken to writing its own pantomimes) is a wild west tale of bandits, comical capers and a mysterious ghostly voice from the sky which is sure to provide the audience with plenty of opportunity to exercise their chuckle muscles. It also gives the opportunity to

help raise funds for local good causes. In the past, this has included the provision of a disability scooter, an electric wheelchair, a stair lift, two hospital-type beds for home use by the disabled as well as equipment for hospital and doctor's surgeries – and the list goes on.

The Pantomaniacs continue to nurture youngsters in the community and are rightly proud that several have gone on to make a career out of the arts industry. Of course, today regulations involving the participation of children is much more stringent than 30 years ago and as such, the Pantomaniacs have embraced these changes and have appointed and trained a number of chaperones to ensure the safety of their young folk. Indeed, it is the groups determination to continue moving with the times that has led to the Pantomaniacs longevity.

There is no doubt that putting on a show like this involves a lot of hard work, but the group is blessed with a wonderful crew who work tirelessly backstage for which the cast are most appreciative. If you would like to find out more about

the Dunchurch Pantomaniacs,' email sueprotheroe@ymail.com or paul.lepoidevin@btinternet.com. Tickets for the new production which opens at the Village Hall on Friday January 18th are on sale from December in Wanda Fashions of Dunchurch (thank you Wanda for being our box office for the past 30 years) or from Wild and Free, Bank Street, Rugby. More information can be found on the poster below.

Here's to the next 30 years.





MONTESSORI
SCHOOLS ASSOCIATION



Yoga Kids

THE RUGBY MONTESSORI



BAMBINIS
PRE-NURSERY SCHOOL

DUNCHURCH



Our Aim

Our aim at The Rugby Montessori Nursery School and Bambinis Pre-Nursery is to provide a totally happy, child-centred environment, where we make each child feel special, secure and valued. We have a strong, knowledgeable and supportive team that is totally committed to providing a high level of care and Montessori education, keeping the needs of each child at the heart of everything we do.

We acknowledge that every child is unique and offer babies and young children the opportunity to explore, experiment and make choices through the Montessori learning environment both indoors and outdoors using the beautiful grounds we are situated in. Providing a place for our little ones to play, learn and discover, whilst building trusting relationships and keeping them safe, happy and healthy.

The Rugby Montessori Nursery School and Bambinis Pre-Nursery recognises the importance of parents as partners and working in partnership with the community.

Call 01788 811218 for more information and a prospectus. Book a visit today.

A warm, caring environment in a beautiful setting

Places from
JULY
2019



Places from
SEPTEMBER
2019



We would like to introduce you to our lovely school and the classes within it.

BUTTERCUPS

For children aged 2-2.6yrs

&

DAISIES

For children aged 2.6-3.6 yrs

A happy, homely atmosphere introducing the children to the early Montessori Method of Teaching and equipment, preparing them for the two pre-school rooms – Yellow and Stepping Stones.

STEPPING STONES & YELLOW ROOM

For children aged 3-5 years.

This is where the children are free to discover and learn using the Montessori Method and teaching equipment. Our aim is to give each child the confidence and skills to prepare them for an easy transfer to big school.

- We participate in Nursery Education Funding for 3 and 4 year olds.
- We are an Ofsted outstanding setting.

"It is the aim of our school to create a happy, caring, structured environment where our children are free to learn, to play, to discover and to grow."

Jane Garland Head Teacher

Call 01788 811218 for more information and a prospectus. Book a visit today.

For children from 6 months to 5 years

Save Dunchurch Action Group

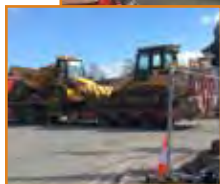
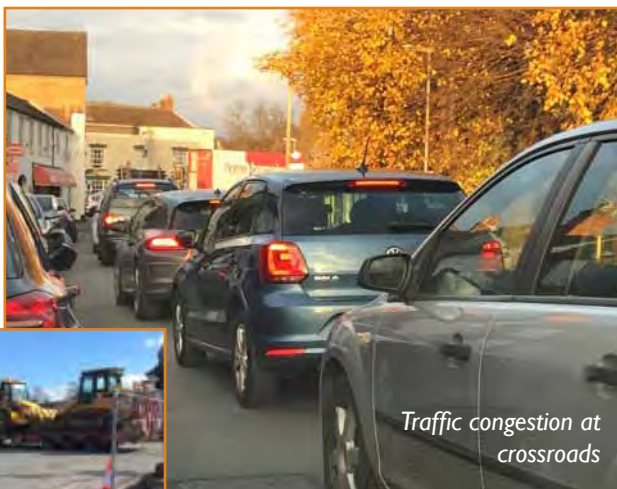
By Mike Judge

We are a group of concerned villagers who got together to question and publicise some of the more glaring errors and overstatements that we believe are contained in the Rugby Borough's Local Plan. However, we are not against all plans for housing if the projections are soundly based on the latest analysis and reputable data (the Office of National Statistics for instance).

We have leafleted the village, written to Councillors and the Press, conducted a survey in the village and reported to the Parish Council as well as presenting evidence to the Inquiry. Along with many other organisations in the Borough, we assisted the Inspector in his decision to reject the Lodge Farm development and in forming his requirement of an astonishing 170 plus main modifications to the Plan. (This represents more modifications than have been required in other Local Plan reports around Warwickshire.) Consultation on those modifications has just closed and in response again, we pointed out that the developments proposed are, according to the Office of National Statistics projections,

simply not required as the number of planning applications already granted (at Houlton and elsewhere) are in excess of the projected requirements.

We have also lobbied hard on the so-called spine road from Cock Robin island, pointing out that it is, at best, only a small contribution to the potential increases to already illegally high levels of pollution at the Dunchurch Crossroad and the traffic overload. We believe that since all parties concede that the cross roads are at capacity (we would say well beyond!) the only solution for our medieval village is a complete ring road around Dunchurch. You can follow us on Facebook and on [savedunchurch.co.uk](https://www.savedunchurch.co.uk) For more information, contact mabjudge@hotmail.com.



School News

by Ian Dewes, Headteacher

This September the governing bodies of Dunchurch Infant School and Nursery and Dunchurch Boughton Junior School federated. This means that there is only one set of governors across both schools and follows on from my appointment as headteacher over both schools. The hope is that we can make decisions that provide for better continuity of education for the children of the village. The two schools remain separate but certain aspects of what we do will be more consistent which will benefit the children as they move from one school to the other.

Brain Teaser

What item formerly in St Peter's Church can now be found in the world famous Victoria and Albert Museum in London?

Answer on page 22



This term

At the time of writing we are coming up to the end of the first half-term of the school year. At the Infant School we have welcomed sixty new children into reception this year, as well as new pupils into our nursery. At the Juniors we have had sixty-six new pupils start this September. Highlights from this term include:

- Children from the Infant School won a prize at the Rugby in Bloom awards (see photo on next page).
- The choir from the Junior School and I took part in Education Sunday at St. Peter's Church.
- Our school dog Woody was 'interviewed' on BBC CWR.
- The Junior School held a special assembly for Reverend Pat as part of the national 'Thank



Infant school bell tower

Your Vicar Week'

- A food festival was organised where children at the Junior School sold their culinary creations to parents and grandparents.

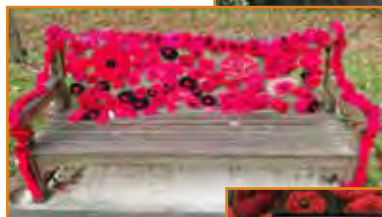
Birthday celebrations

Next April, the Infant School building is ninety years old. We are in the early stages of planning an event open to the local community where people can come into school and see an exhibition of photos from the building's history. More in the next edition of the FODS magazine.

Poppies galore

Dunchurch Infant School and Nursery entered this year's Rugby in Bloom 2018 schools category with this stunning display of poppies that was created to commemorate the end of the first world war. The project was a joint venture involving children, parents, teachers and friends of the school and their efforts were acknowledged with a deserving platinum award. Stunning we think you will agree.

In the weeks prior to Remembrance Day more poppies have appeared around the village, decorating trees and benches.



Above: The infant school winner.

Far left: The bench in Northampton Lane decorated by members of the WI.

Dunchurch Village Hall

It doesn't seem possible that our village hall is 15 years old this December. Congratulations to the Trustees for successfully 'steering' the hall to continuing success. We have an extremely well used facility which is undoubtedly one of the best in the area.



Dunchurch village hall and sportsfield



Left: Poppies knitted by Sue Protheroe and Betty Green displayed by the stocks in the Square. A second tree was adorned with poppies made by the ladies of Dunchurch Voices.

Rugby Village Bridge Club

We are a friendly, EBU affiliated duplicate bridge club offering four pairs sessions and three practice sessions every week, plus occasional courses and teams of four events. We play in the Club Room in Dunchurch Sports Field and Village Hall.

See more at www.rugbyvillagebridge.co.uk, find us on Facebook, email rugbyvillage_bridge@gmail.co.uk or call 07710 467 023.

Junior FODS

Calling all younger members of our village (and where relevant, their parents). We would love to hear from our junior residents. Help us fill a page with anything that may be of interest to you. Email us a poem, scan a drawing or maybe even submit a funny joke that made you laugh. Send us a letter. What do you like about living in Dunchurch? It's up to you. Use this page to give your voice to living in our village.

Here's a few jokes just to get you started.

*What do you call a bear with no teeth?
Gummy bear!*

*Why didn't the skeleton go to the dance?
He had nobody to go with!*

*What do you get when you cross an elephant with a fish?
Swimming trunks!*

We're sure you can do better! We're waiting to hear from you on friendsofdunchurch@gmail.com

Youth Club

Every Monday from 5 to 6.30pm during term times there is a free youth club in the Dunchurch Methodist Church on Cawston Lane. The club, run by Rugby Borough Council, is for children aged 3–13 years; any child under 8 must be accompanied by an adult.

Youth workers have been checked by the Disclosure and Barring Service, hold a play and sports qualification and are first aid trained. Contact Tom Parker, RBC's Play and Recreation Officer, on 01788 533655.

Where's Walter?

Meet Walter the crow! Walter has been an ever present member of the cast in the Dunchurch Pantomaniacs productions and has appeared on at least one of the scenery backdrops in every show. Walter is hidden somewhere in this magazine. Search the pages to find where he is hidden and

email your name and age together with details of where you found him and we will enter you into a prize draw to win a £10 book voucher courtesy of the Dunchurch Pantomaniacs. Closing date for entries is January 6th. Reply to friendsofdunchurch@gmail.com Happy hunting!



Word search

Can you find these ten words in the puzzle below?

library • school • walter
church • tennis • poppy
panto • flower • bell • joke

u	m	y	u	f	l	o	w	e	r
l	p	o	p	p	y	s	a	y	x
i	f	i	s	s	c	h	o	o	l
b	m	t	e	w	s	b	f	w	g
r	p	e	p	g	f	f	k	a	t
a	j	n	a	k	g	x	v	l	s
r	o	n	n	a	v	y	k	t	w
y	k	i	t	b	e	l	l	e	h
w	e	s	o	k	l	i	n	e	
t	c	h	u	r	c	h	s	w	q

Formed by likeminded residents who love Dunchurch and its heritage and wish to protect and enhance its environment in order to make the village a better place to live in, work in and visit.



FRIENDS OF
DUNCHURCH
SOCIETY

Come and join us

Christmas

SOCIAL EVENING
WITH FRIENDS OF DUNCHURCH

ENJOY

**A BAR CHRISTMAS MUSIC
SKITTLES DARTS BAR -
BILLIARDS PLUS RAFFLE**

**DUNCHURCH SOCIAL CLUB
THURSDAY 20TH DECEMBER, 8PM**



**GRAND RAFFLE
DRAW AT 9PM**

**MANY PRIZES
INCLUDING A M&S
LUXURY CHRISTMAS
HAMPER**

ALL PROCEEDS FROM THE RAFFLE
GO TO FRIENDS OF DUNCHURCH



**BUFFET
EVERY
SUNDAY
£13.95**

EAT AS MUCH
AS YOU LIKE

**ORDER
ONLINE AT**

www.malancha.co.uk

DISCOUNTED TAKEAWAY PRICE LIST

TEL: 01788 819141

Tel: 01788 811851

OPENING TIMES

7 Days a Week (including Bank Holidays) 5.00pm till late

2 Daventry Road, Dunchurch, Rugby, CV22 6NS

All major Credit/Debit and Bank Cards accepted.

TRADITIONAL STARTERS

Jalpari Pani Pat	£5.95
Fried king prawns marinated with turmeric, herbs and mustard paste for its own authentic taste.	
Paneer 🍗 Chicken/Lamb/Chilli	£4.95
Paneer stir fried with spring onion, mixed peppers, chilli and garlic accompanied with either chicken or lamb or just chilli.	
Aloo Cheese Bora	£4.25
Spicy mashed potato tikki with a melt in your mouth cheese filling, a starter to get your taste buds rolling.	
Murg-ee Kebab	£4.50
Minced chicken marinated in garlic, ginger, herbs and coated with golden breadcrumbs.	
Sheek Kebab	£3.50
Mince lamb roasted in clay oven	
Chicken or Lamb Tikka	£3.50
Roasted in clay oven.	
Tandoori Chicken (on the bone).....	£3.50
Roasted in clay oven	
Onion Bhajee 🍷🍷	£2.95
Somosa 🍷🍷	£2.95
Spicy meat or vegetables in crispy pastry.	
Nargis Kebab	£3.95
Scotch egg covered with minced lamb.	
Shashlick	£3.95
Chicken or lamb grilled in tandoor with onion, tomato and green pepper.	
Prawn Cocktail	£3.50
Reshmi Kebab	£3.95
Mince chicken shallow fried.	
Tandoori Jhinga	£5.95
Roasted king size prawns.	
Chicken Pakora	£3.50
Chicken fried with batter and breadcrumbs	
King Prawn Butterfly	£4.95
King prawn in spicy batter with breadcrumbs, deep fried.	
Tandoori Combination	£5.95
Mixture of tandoori dishes.	
Shami Kebab	£3.50
Spicy minced lamb steak fried.	

TANDOORI SIZZLING SPECIALITIES (main course)

Chicken or Lamb Tikka	£6.95
Garlic Chicken Tikka	£6.95
Tandoori Chicken (half on the bone) ...	£6.95
Tandoori King Prawn	£10.50
Chicken or Lamb Shashlick	£7.25
Tandoori Combination	£7.95
Paneer Tikka 🍗 (Indian Cottage Cheese)	£7.25
Fish Tikka Biran (Cod).....	£7.95
Scottish Pink Salmon Tikka	£10.50

CONNOISSEURS STARTERS

Sheek Mach	£5.50
Rainbow trout roasted in clay oven.	
Chandu	£5.50
Silver pomfret fish roasted in clay oven.	
Masala Mach Biran	£5.50
Cod fish cooked on the grill with fried onions and tomatoes.	
Stuffed Roshun Pepper	£4.50
Green pepper roasted in clay oven with minced lamb or vegetables 🍷.	
Murghi Kofta Kebab	£3.95
Chicken shallow fried in batter.	
Lamb Chops	£5.95
Spicy marinated chops grilled in clay oven.	
Chat Masala	£3.95
Chicken or potato 🍷 cooked in a tangy sauce.	
Paneer Tikka 🍗.....	£3.95
Indian cottage cheese roasted in clay oven.	
Jhinga Puree 🍷	£5.95
King prawn cooked in spices with spinach & served in puri bread.	
Chot-Poti	£3.95
Chicken or lamb cooked with chana dhal and green chilli.	
Chingri Puree 🍷	£3.95
Prawn with spinach cooked in spices & served in puri bread.	
Tandoori Stir Fry	£3.95
Chicken fried with onion, capsicum & mushrooms.	
King Prawn Bahar	£5.95
King prawn roasted in clay oven with capsicum, tomatoes and onions.	
Garlic Chicken Tikka	£3.95
Chicken roasted in clay oven with garlic.	

CHEFS SPECIALITIES

Khasia Lamb	£7.95
Mouthwatering Madras- hot lamb, slowly simmered and sliced with garlic and authentic herbs tip soft and melting.	
Masala Chom Chom	£10.50
A hot spicy dish with shelled king prawns, infused with ginger, garlic, capsicum and chefs own aromatic spices.	
Naga (HOT) Lamb, chicken or prawn.	£7.95
Authentic extra hot bangladeshi chilli (naga) in a bhuna style sauce. Giving a distinctive aromatic flavour.	
Shatkora	£7.95
Traditional bangladeshi shatkora (Citrus) vegetable from Sylhet cooked with lamb or chicken, enhancing the flavour.	
Handi	£7.95
Tenderised meat or chicken dish cooked to perfection with chefs own extensive aromatic blended spices and herbs	
Tawa	£7.95
Tawa cooked with onion, green pepper, strongly spiced and herbs, served on a sizzling pan.	
Lamb Chops Akbor-E	£7.95
A medium spiced bhuna dish served piping hot in a traditional Khorai dish, garnished with coriander & tomatoes.	

Allergy Guide

If you suffer from food related allergies please inform us at the time of ordering.

🍷 Diary 🍷 Gluten 🍷 Nuts 🍷 Vegan

TRADITIONAL MAIN COURSE

Prawn.....	£6.95
Chicken.....	£6.50
Lamb.....	£6.95
Chicken or Lamb Tikka.....	£6.95
Tandoori Chicken (Off the bone).....	£6.95
King Prawn.....	£9.95
Keema (minced lamb).....	£6.50
Paneer ①	£6.95
Mixed Vegetable ✓ or Mushroom ✓ ..	£6.50
Fish Tikka.....	£7.95

All of the above items can be cooked using a sauce of your choice from the following selection:

CURRY

Basic medium spiced sauce.

KORMA **N ①**

Very mild sauce cooked with coconut & almond.

MALAYAN **①**

Cooked with pineapple, in a mild smooth sauce.

BHOONA

Cooked with onions, green peppers, tomato & fresh herbs

DOPEAZA

Medium dish cooked with onions.

ROGAN JOSH

Cooked with green herbs & spices, garlic, onions & tomatoes.

DANSAK

Cooked with lentils in a thick, hot, sweet & sour sauce.

PATHIA

Cooked with tomatoes, onion, fresh herbs & spices in a hot & sour sauce.

MADRAS

Cooked in a fairly hot spiced sauce.

SAAG WALLA

Cooked in garlic and spinach sauce

VINDALOO

A very hot dish made from red chilli.

Any vegetable can be added to your dish, such as mushroom, potato, spinach, cauliflower, chick peas, bhindi, lentils, mixed vegetables and peas for an extra 65p.

POPULAR BALTI DISHES

The strength of these dishes can be prepared to taste.

You can ask for mild, medium, slightly hot, madras or vindaloo hot.

Mixed Vegetable Balti ✓	£6.50
Keema Balti.....	£6.50
Chicken Balti.....	£6.50
Lamb Balti.....	£6.95
Chicken or Lamb Tikka Balti.....	£6.95
Tandoori Chicken Balti (Off the bone) ...	£6.95
Paneer Balti ①	£6.95
Prawn Balti.....	£6.95
King Prawn Balti.....	£9.95
Fish Tikka Balti (Cod).....	£7.95

CELEBRATION SPECIALITIES

Some fish dishes may contain bones

Sunar Bangla Mach.....	£7.95
Bengal fish cooked with aubergine and a touch of green chilli.	
Tandoori Trout Masala N ①	£7.95
Rainbow trout cooked in a mild creamy sauce.	
Roop Chand Masala N ①	£7.95
Silver pomflet fish cooked in a mild creamy sauce.	
Fish Bengal Masala N ①	£7.95
Bengal fish cooked in mild creamy sauce.	
Murghi Masala N ①	£6.95
Chicken cooked with mince lamb, egg and tomatoes.	
Spicy but mild dish.	
Chicken/Lamb Tikka Masala N ① ... £6.95	
Cooked in a mild, creamy sauce.	
Tandoori King Prawn Masala N ① ... £10.25	
Cooked in a mild creamy sauce.	
Jhinga Zafron N ①	£10.25
King prawn cooked in a mild sauce with zafron.	
Tandoori Murghi Chana Palak.....	£6.95
Chicken cooked with chick peas & spinach, medium.	
Pasanda Nawabi N ①	£6.95
Lamb cooked with pistachio, a very mild dish.	
Dakeswari.....	£6.95
Lamb cooked in a spicy sauce. Slight hot.	
Badami N ①	£6.95
Chicken or Lamb cooked with various nuts and cream, a very mild dish.	
Rajeswari.....	£6.95
Chicken cooked in a spicy sauce. Slightly hot.	
Makani N ①	£6.95
Chicken or Lamb cooked in a slightly hot sauce with plum tomatoes and cheese.	

To suit your taste the next selection of dishes may be cooked with any of the following.

Mixed Vegetables ✓	£6.50
Chicken.....	£6.50
Lamb.....	£6.95
Chicken or Lamb Tikka.....	£6.95
Paneer ①	£6.95
Prawns.....	£6.95
King Prawns.....	£9.95
Fish Tikka (Cod).....	£7.95
Tandoori Chicken (off the bone).....	£6.95
ZALFREZI	
Cooked with capsicums, onion, fresh green chillies and fresh herbs in a hot sauce.	

ACHARI

Cooked with homemade pickles, medium with tangy taste.

GARLIC MASALA

Cooked with garlic, spicy or medium

SOUTH INDIAN CHILLI MASALA

Cooked in a smooth, spicy hot sauce.

JAAL JHUL

Cooked Bengal style with garlic, cinnamon and herbs. Hot and spicy.

ROTHON MASALA **N ①**

Cooked with fruit cocktail and cream, very mild dish.

KARAH

Cooked with tomatoes, onion and capsicum, spicy medium dish.

SELECTED BIRIANI DISHES

You may ask for a different strength sauce, madras, vindaloo, etc

Chicken.....	£7.50
Lamb or Prawn	£7.95
Chicken or Lamb Tikka	£8.50
Paneer Tikka ①	£7.95
King Prawn	£9.95
Tandoori Chicken (off the bone)	£7.95
Mixed Vegetables ②	£7.50
Special Combination.....	£8.95

Persian or Malayan extra 65p. Extra Mushroom 65p

EUROPEAN DISHES

Following dishes are served with chips

Sirloin Steak	£11.95
Chicken or Prawn Omelette	£8.25
Mushroom Omelette	£8.25
Prawn Omelette	£8.25
French Fried Chicken.....	£8.25
Fried Scampi	£8.25

VEGETARIAN COURSE

To accompany your main meal we have selected the following vegetable dishes. We recommend them to compliment the meat that you order.

	Side	Main
Saag Cream Mild ①	£3.25	£6.50
Vegetable Bhajee ②	£3.25	£6.50
Mushroom Bhajee ②	£3.25	£6.50
Bombay Aloo ②	£3.25	£6.50
Saag Bhajee ②	£3.25	£6.50
Saag Paneer ② ③	£3.25	£6.50
Aloo Gobi ②	£3.25	£6.50
Vegetable Curry ②	£3.25	£6.50
Saag Aloo ②	£3.25	£6.50
Bhindi Bhajee ②	£3.25	£6.50
Cauliflower Bhajee ②	£3.25	£6.50
Tarka Dhall ②	£3.25	£6.50
Chana Bhajee ②	£3.25	£6.50
Mottar Paneer Mild ①	£3.25	£6.50
Baigon Bhajee ②	£3.25	£6.50

RICE

Lemon Fried Rice	£2.70
Garlic Fried Rice	£2.70
Chilli Fried Rice.....	£2.70
Aloo Fried Rice	£3.50
Steamed Basmati Rice	£2.50
Pilau Rice	£2.60
Fried Rice	£2.60
Egg Fried Rice.....	£2.70
Vegetable Pilau Rice.....	£2.70
Special Pilau Rice	£2.70
Mushroom Pilau Rice.....	£2.70
Keema Pilau Rice.....	£2.90
Chana Pilau Rice.....	£2.70
Rothon Pilau Rice.....	£2.70

NAAN & SUNDRIES

Special Stuffed Naan ① ② £2.80
Finely chopped chicken tikka pieces topped with green chilli and cheese.

Stuffed Fruit Naan ① ② £2.80
Naan bread stuffed with small pineapple pieces, giving it a fruity taste.

Naan ① ②	£2.50
Keema Naan ① ②	£2.70
Garlic Naan ① ②	£2.60
Peshwari Fruits & Nuts Naan ① ② ③ ...	£2.70
Kulcha Naan ① ②	£2.60
Cheese Naan ① ②	£2.80
Chilli Onion & Coriander Naan ① ②	£2.60
Tandoori Roti ③	£1.95
Paratha ③	£2.60
Stuffed Paratha ③	£2.70
Chapathi ③	£1.95
Puri ③	£1.95
Raitha ①	£1.50
Popadom.....	£0.85
Masala Popadom	£0.90
Chutneys/Pickles.....	£0.70
Tamarind Sauce	£0.70
Chips	£2.95

Looking back...

Dunchurch Library

In September of 1968, our village library moved from what was described as a 'damp and dismal single room building' on Southam Road to its present light and airy site in School Street. Clearly, its previous position in what was once a cobbler's shop was a highly unsuitable venue and there was much joy from villagers and library staff alike at its relocation.

Then run by Warwickshire Education Committee Library, the new library was staffed by Miss Josephine Day who was assisted by Mrs G Rout. The relocation to the larger venue meant that avid readers could choose from over 7000 books rather than the previous 2000 with a good selection of children's books included. In a sign of the times and 1960's modern day thinking, 'no talking' signs were removed but visitors were still expected to keep their voices down! No smoking signs were also on display.



Dunchurch Community Library

The total cost of the move and refit at the new venue was approximately £17,000 but it was considered money well spent in what was then part of a comprehensive plan of library development in Warwickshire. What a difference this was to 2011 when our library was under threat of closure due to cutbacks!

How times have changed

Dunchurch Community Library is now a flourishing hub for the village. Run entirely by volunteers since April 2012, under the controlling authority and support of the Parish Council and the County Council's Library and Information Service, it has continued to offer the community all you would expect from a modern library.

See the Community Directory for library contact details.



Current opening times are:

Monday	Closed
Tuesday	10.00 – 18.30
Wednesday	Closed
Thursday	10.00 – 17.00
Friday	10.00 – 17.00
Saturday	10.00 – 13.00
Sunday	Closed

The Founding of the WI

The first British Women's Institute was formed on September 16th 1915 on the island of Anglesey, North Wales at Llanfair Pwllgwyngyll (frequently shortened to Llanfair PG for obvious reasons)! It was originally founded to encourage countrywomen to become involved in growing and preserving food to help increase the supply of food to a nation that was suffering from

the food shortage effects of the First World War.

However, the current WI movement offers so much more and here in Dunchurch and Thurlaston, we are very lucky to have our own thriving branch who will shortly be celebrating their own centenary with a variety of events. We are grateful to them for their contribution below.



Dunchurch and Thurlaston WI Centenary Calendar of Events

by Freda Bennett

Another centenary to celebrate is the foundation of our local WI. The initial setting up meetings of the Dunchurch & Thurlaston WI took place in the autumn of 1918 with a meeting finally open to members in January 1919.

To begin with, meetings were held in the National School for Girls and Infants situated in the churchyard. (This building was demolished in the early 1930s after the new school was built in School Street). Our present WI

Hall was donated to us by Lord Waring in the 1920s.

Our first centenary celebration, a garden party, was held in lovely weather back in August this year. Dressed in suitable attire for a century ago, this was obviously a real photo opportunity and this photo will be featured on the front page of our County magazine in December with an accompanying article about the history of our WI.

Several ladies could be seen planting bulbs near the WI centenary tree in

October to bloom next spring when our celebrations will be in full swing.

WI members are due to parade through the village (in costume) at 10am on the morning of Saturday 8th December and an invitation is extended to the crowds to join us afterwards in the WI Hall for tea and cake.

A special WI Anniversary meeting will also be held in December when we will be joined by our National Chairman and County past and present Chairs.

August garden party

The first meeting of 2019 will feature a presentation by our History Group – ‘A journey through our 100 years’ followed by a supper. Watch out in June as both villages are due to be yarn-bombed at some point before the village fete day. We will also join in the usual fete parade and will host a ‘Jam and Jerusalem’ stall.

A special treat of a seaside coach trip will be enjoyed in July and a ‘Picnic on the Green’ in August. We will have a celebratory lunch in October and a Grand Finale Concert at the end of our special year. Phew! We have a lot to look forward to.

Dunchurch Tennis Club

The tennis club has been given planning permission for the construction of two, all-weather, floodlit courts together with the approval of the Sportsfield and Village Hall Trustees for siting the courts on the sportsfield. More recently, the club is considering slightly altering the configuration to also facilitate the inclusion of a netball court and has the enthusiastic support of the netball league to do so.

As ever, the major problem with the project is finance, especially as the cost is in

the region of £80,000 to £90,000. However, the Parish Council, who recommend projects to benefit from 106 grants (this is money provided by developers to benefit the local community when housing and other developments are built) have approved the project as worthy of support and matching grants might then be forthcoming from a number of potential sources. Watch this space for further development. In the meantime, for

more information, contact Chairman Mike Judge on mabjudge@hotmail.com.



Dunchurch Remembers

Surely, the outdoor Remembrance Service traditionally held on the second Sunday in November is by far the most poignant of our regular services. However, never more so than this years which fell on the 11th November, Armistice Day and marked the 100th year anniversary of the end of hostilities in the First World War. This simple act joins together the United Kingdom and the Commonwealth of Nations to commemorate the contribution of British and Commonwealth military and civilian servicemen and women in the two World Wars and in later conflicts. Sadly, our own village, together with Thurlaston lost 43 souls and we can only imagine the dreadful impact this had on the community.

'At the going down of the sun and in the morning, we will remember them.'



Photograph taken before the Remembrance Service showing the newly cleaned memorial together with the very smart addition of wooden posts and fencing – a collaboration between the Parish Council and the War Memorial Trust.

Ringing Remembers

by Mike Bennett, Tower Captain

At 12.30pm on 11th November, with church towers nationwide, our bells at St. Peter's rang out as part of the 'Ringing Remembers' campaign.

This campaign sought to recruit new bellringers to commemorate the 1400 bellringers who died in WWI.

Graham Townshend, our 'Ringing Remembers' recruit, was part of our band on that day.

This was part of the Government's national WWI Centenary Celebrations. We hope you managed to hear us on that very special occasion.

Remembered in Stain Glass Windows

by **Freda Bennett**

Having recently marked the 100 years since the end of WWI, it is worth noting that St. Peter's church contains several memorial windows.

In the North Aisle:

- 'War and Peace' in memory of Old Boys and Masters of Dunchurch Hall, who died in the Great War.



Showing Saints Michael, George and Gabriel, a memorial to former pupils of Dunchurch Lodge and Dunchurch Hall who fell in the Boer and the Great War.

- 'Valour and Victory' in memory of HJ Houldsworth, Sub Lt, RN, died 23rd February 1919 aged 20.

In the South Aisle:

- East wall – A window showing Saints Michael, George and Gabriel, a memorial to former pupils of Dunchurch Lodge and Dunchurch Hall who fell in the Boer and the Great War.
- South wall – A window showing the Angel of the Resurrection, to the memory of Rev Frank Harbord, one of our former Vicars (1912–1917), who was also a Chaplain in WWI and died near Ypres.

These windows are at their very best in the morning sunshine.

Civilian casualties

On the evening of Tuesday 19 November 1940, two civilians sadly lost their lives when the the Dunchurch Social Club (formerly known as the Dunchurch Working Mens Club) was damaged by the blast from a bomb which exploded in the square. They were Victor Edward Eley (43), and Arthur Mason (57). Both men were 'laid to rest' in St. Peter's churchyard.

Pilot casualty

John McEwan Wright (21), Pilot Sergeant, Royal Air Force Voluntary Reserve, 32 Squadron, crashed his Hawker Hurricane on 27 December 1940 on the sloping fields between Dunchurch Lodge and 'The Sands', Daventry Road. Born in West Riding, Yorkshire, he was buried in Chevington Cemetery, Broomhill, Northumberland.

Thatched bus shelter

Whilst there is no specific local memorial to the above losses, the thatched bus shelter in Dunchurch is unique and dedicated to the village dead of WW2. More about this iconic structure in our next issue.

St Peter's Church history

As our village's largest and oldest place of worship, there is a huge amount of history attached to St Peter's Church, and certainly too much to include in just one issue of our magazine! We will therefore be including further historical facts in our future issues, but below you will find just a taster of what is to come.

Even the Domesday book infers the presence of a church before the year of 1066 and confirms the existence of a priest. However, for the most part, the present church owes its existence to the work of the monks of the Cistercian Abbey of Pipewell in Northamptonshire. Founded in 1143, the Abbey acquired large areas of land in the Dunchurch area, and one assumes, the land upon which the church is built.



St Peter's Church before improvements to tower

The appropriation of the church was authorised by Richard Peche, the Bishop of Lichfield and Coventry (1161--1182) and in 1329, a secular priest, Lambert de Hale was appointed by the Bishop as the first Vicar of Dunchurch.

Booklets on the history of St Peter's Church are available in the church for only £2.

St Peter's Church Christmas Programme *(Including St Edmunds Church, Thurlaston)*

Sun 2 nd Dec	4pm	Open air nativity with Dunchurch Baptist and Methodist Church at the square
Sun 16 th Dec	6.30pm	Festival of 9 lessons and carols
Sat 22 nd Dec	6.30pm	St Edmunds carol service
Sun 23 rd Dec	10.30am	Family carols and Holy Communion
Mon 24 th Dec	4.00pm	Crib service
Mon 24 th Dec	11.00pm	Midnight Eucharist
Tues 25 th Dec	9.00am	St Edmund's Holy Communion
Tues 25 th Dec	10.30am	Family Holy Communion

Brain Teaser Answer

In 1908 the stonework tracery of the medieval east window was removed from St Peter's Church and in 1931, it was donated to the Victoria and Albert Museum by Joseph Rochelle Thomas in memory of his wife Jane Thomas. It is now prominently displayed in the museums Medieval and Renaissance Gallery.

Dunchurch Baptist Church history

by Claire Siddaway

The first group of Baptist believers met at a house in Thurlaston supported by Rev George Jones who travelled from Wolston. In 1834 a piece of land was donated and a small chapel was built on the main road from London to Coventry on the parish boundary between Dunchurch and Thurlaston. In 1866, the church was reopened after refurbishment and an extension to double the seating capacity.

In the 1960s it was decided a new smaller building was required so the old chapel was taken down and a new prefabricated concrete building was erected and opened in June 1971. As the church grew, three further phases of extension enlarged the building and added a hall and rooms on the back. In 1993 the church called



Dunchurch Methodist Church, currently shared by both the Baptist and Methodist Churches

Rev Matthew Cooper to be the first full-time minister and he was followed by Rev Dave Woods in 2007.

The numbers attending church activities have increased and the building has deteriorated so for the past few years we have been working on a building project. We received planning permission in Jan 2018 and on

23rd Sept we had our last service in the old building and have relocated to join with Dunchurch Methodist Church.

Currently, the Baptist and Methodist Churches are sharing a building at 2 Cawston Lane and worshipping together. This arrangement is likely to continue throughout most of 2019 and 2020.

Dunchurch Baptist and Methodist Church Christmas Programme

Sat 1 st Dec	10.30am-12.30pm	Messy church
Sun 2 nd Dec	4pm	Open air nativity with St Peters Church at the square
Sun 16 th Dec	10.30am	All age service
Sun 23 rd Dec	7pm	Carols by candlelight
Mon 24 th Dec	9.30pm	Christmas Eve Communion
Tues 25 th Dec	10.30am	Christmas Day Service

Dunchurch Community Directory

Badminton Group	Dunchurch Village Hall, Monday 7.30pm	judge.patricia@googlemail.com Pat Judge 01788 810253 Carol Seager 01788 814178
Beavers	Boys and girls aged 5¼ – 8 Mondays and Tuesdays at the Scout hut Done Cerce Close.	www.dunscout.org.uk join@dunscout.org.uk
Cubs	Boys and girls aged 8 – 10½ Wednesdays at the Scout hut, Done Cerce Close.	www.dunscout.org.uk join@dunscout.org.uk
Dunchurch Allotment Association	Situated on Coventry Rd	www.dunchurchallotments.org.uk admin@dunchurchallotments.org.uk Secretary Paul Sanders 01788 811744
Dunchurch and Bilton Cricket Club	Based as Dunchurch Village Hall Rugby Rd.	https://dunchurchbilton.play-cricket.com
Dunchurch and Thurlaston WI	Meetings 2nd Thursday of each month, 7.30pm at the WI Hall, Southam Rd.	Maureen Melson 01788 810911 Marion Abernethy mariona@ntlworld.com
Dunchurch Band	Senior and training band	www.dunchurchband.co.uk dunchurch.band100@yahoo.com
Dunchurch Baptist Church	Currently meeting at the Dunchurch Methodist Church, Cawston Lane.	www.dunchurchbaptistchurch.org.uk Minister Dave Woods 01788 810132 davewoods@dunchurchbaptist.org.uk Secretary Claire Siddaway 01788 815752 secretary@dunchurchbaptistchurch.org.uk
Dunchurch Boughton C of E (VA) Junior School	Primary education situated in Dew Close	www.dunchurchjuniorschool.org.uk admin3391@welearn365.com 01788 811028
Dunchurch Community Library	School Street	www.warwickshire.gov.uk/dunchurchlibrary dunchurchcommunitylibrary@btconnect.com 01788 811355
Dunchurch Festival Group	Organise fete and other events. Meetings third Monday of each month 7.30pm at the village hall.	www.dunchurchevents.org Rob Collings 01788 817307 mashedspud1@gmail.com
Dunchurch health walks	Tuesday 2pm, Friday 10.30, 1st Sunday of month 10.30. Meet at war memorial	Pearl Bennet 01788 810367
Dunchurch Infant School and Nursery	Nursery children are taken from aged 2yrs 9months. Other year groups, Reception, year 1 and 2	www.dunchurchinfantschoolandnursery.co.uk office@dunchurchinfants.co.uk 01788 810292

Dunchurch Pantomaniacs	Organise and perform annual village panto in January. Rehearsals begin in October.	paul.lepoidevin@btinternet.com sueprotheroe@gmail.com
Dunchurch Parish Council	PC office based in the Library. Open Tuesday and Thursdays 10am – 1.00pm	clerk@dunchurchpc.org 01788 817550 or 07474 705061
Dunchurch Photographic Society	Meetings held at WI Hall, Southam Road.	www.dunchurchps.com secretary@dunchurchps.com
Dunchurch Surgery	Dunsmore Heath (off Rugby Rd)	www.dunchurchsurgery.warwickshire.nhs.uk 01788 522448
Dunchurch Village Hall	Rugby Road.	jane.bookings@dunchurchsportsandhall.co.uk 01788 522444
Dunchurch Voices	Ladies choir meet Wednesdays, 7.30pm at the infant school.	Barbara Davies 07890 659857
First Dunchurch Scout Group	Fun, challenge and everyday adventure for boys and girls aged 10 ½ – 14. Done Cerce Close on Thursdays	www.dunscout.org.uk join@dunscout.org.uk
Guides	Girls club aged 10 – 14 years Wednesdays 6.45 – 8.15 at Methodist Church, Northampton Lane.	Sue 07969 909727
Rainbows	Club for girls aged 5 – 7 years	nicola.townsendkennedy@gmail.com
Rugby Village Bridge Club	EBU Affiliated. Four pairs sessions and three practice sessions weekly Courses/teams of four events occasionally. Held in the club room, Dunchurch Village Hall.	www.rugbyvillagebridge.co.uk rugbyvillagebridge@gmail.co.uk 07710 467023
Save Dunchurch Action Group	Fighting over development and for an infrastructure to protect the village from increasing traffic.	www.savedunchurch.co.uk mabjudge@hotmail.com
St Peter's Church		Vicar: Reverend Patricia Townshend revptownshend@gmail.com, 01788 461987 Churchwardens: Steve Cook: 07501 461909 / 01788 521263 Kathryn Fowler: 07780116024 / 01788311118 Thurlaston Deputy Churchwardens: Brian & Jackie Bowsher: 01788 812094 churchwarden@stpeters-dunchurch.org

To make any amendments or to add your Dunchurch-based, non-commercial club or organisation, please email **friendsofdunchurch@gmail.com**

**DUNCHURCH
VOICES**
(Ladies Choir)

CHRISTMAS CONCERT
*In aid of
Rugby Dementia Support Group*

Join us for a festive candlelit evening

Friday 14th December 2018
St Peter's Church
Dunchurch
7.30pm
Tickets £5
Refreshments available
(Donations supporting the above charity)

*Tickets on sale in
Wanda Fashions of Dunchurch
Telephone: 01788 522021*

PEST CONTROL
IAN GALL PEST CONTROL

Home and Large Scale control of:

- Moles
- Wasps
- Ants
- Rats
- Mice
- Rabbits
- Fleas
- Bed Bugs



Telephone:
07764 407749
01788 815594 (after 6pm)

info@iangallpestcontrol.co.uk
www.iangallpestcontrol.co.uk

FODS Charity Auction – 'Prosecco, Puddings & Promises'



On 8th March 2019 at the Village Hall, we are holding a fundraising auction, but we can't do it without YOUR help. Do you have a hobby or a skill you could use? We need people to pledge what they can give or provide. Everyone can do something! Here are some great ideas to inspire you:

- Dog walking
- Babysitting
- Airport transfer
- Home tuition
- Guitar lesson
- Home baked item
- Ironing
- Decorating
- Artwork by a local artist
- Spa treatment
- Family photo session
- Computer help
- Gym membership
- Sports coaching
- Language tuition
- Face painting for a children's party
- Cook for someone's dinner party
- Afternoon tea
- Tickets for a sporting event
- Car wash & polish
- Sailing experience
- Window cleaning
- Manicure
- Pedicure
- Chauffeur for an evening out
- Slave for half a day!
- Theatre tickets
- Reflexology

Please email Carol Seager at
friendsofdunchurch@gmail.com with
 your pledges!

Thank you.

Dunchurch Social Club



- Open to the public and welcomes families
- Two function rooms available to hire free of charge
- Beer garden

The Square, Dunchurch, Rugby CV22 6NU

Tel 01788 811177



Follow us on Facebook for up-to-date promotions and events

Visit Dunchurch's new Post Office



Open from 9.00 to 5.30 Monday–Friday and 9.00 to 12.30 on Saturday

- Full postal service
- Moneygram
- Free cash withdrawal
- Currency
- Car tax office
- Bill payments accepted
- Phone top ups
- Council payments etc

More than just a post office

- Full stationery section
- Large stock of greeting cards and gift wrap
- Fresh bread and milk daily
- Large confectionery stand
- Fresh hot coffee
- Dry cleaning and alterations



33b Southam Road (formerly the Mill Outlet)



The Huntsman Carvery

01788 811748

Now Offering Our New Split Priced Menu

£14.95 Adult Carvery main course, Tuesday to Saturday Evenings

Still all you can eat !!

Starters and sweets from £4.50

Sundays all inclusive 3 course menu £25.95



Visit our website @ www.huntsmancarvery.co.uk/com